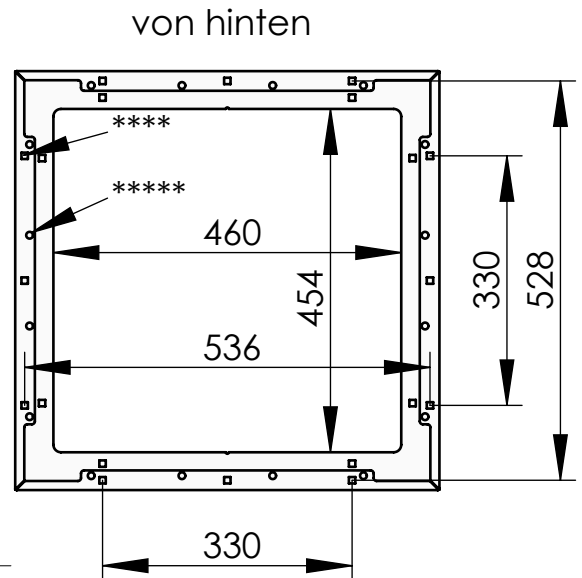
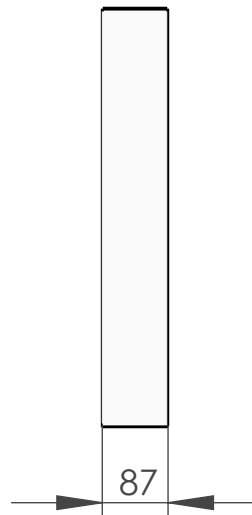
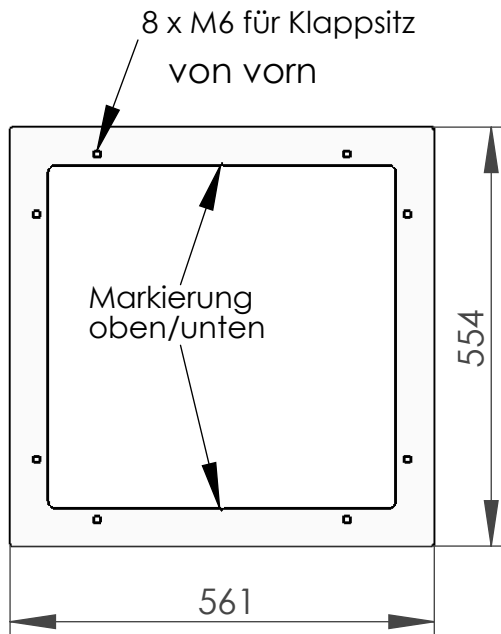
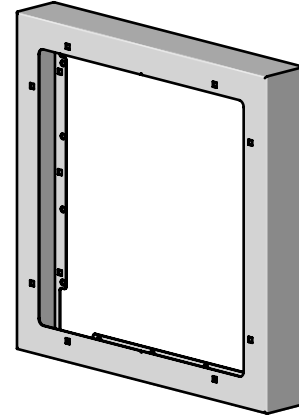
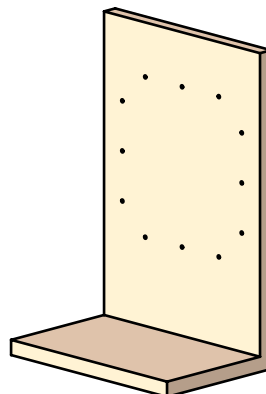
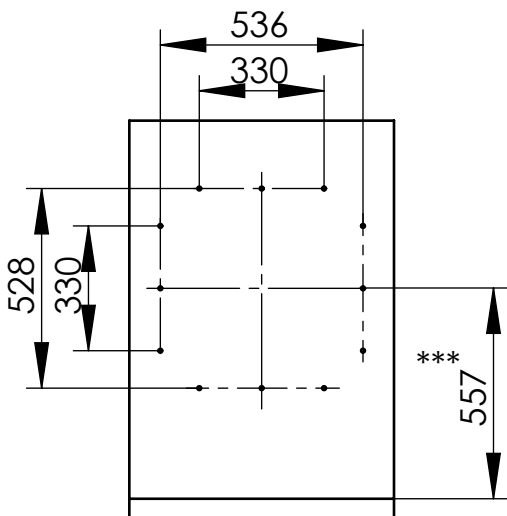


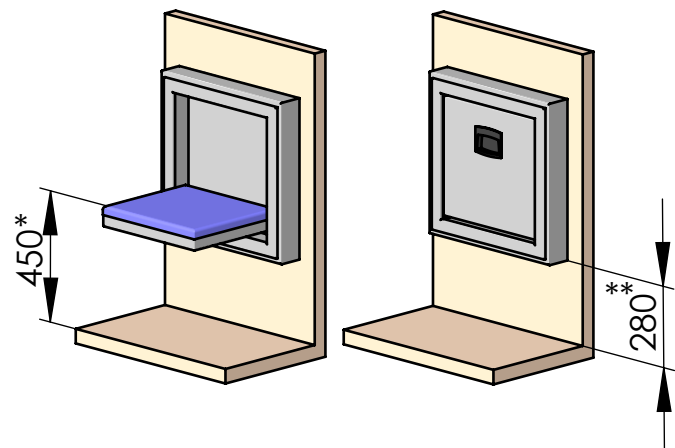
**Modell 104-11-Stahl**  
**Wandgehäuse**  
 für Wandeinbau-Klappsitz



\*\*\*\* 12 Löcher  $\square 8,5$  oder  
 12 Innengewinde M6  
 \*\*\*\*\* 16 Löcher  $\varnothing 9$



dargestellt mit  
 Klappsitz 007-13



\* Sitzhöhe gemäß DIN EN 81-70: 480 bis 520 mm  
 \*\* dementsprechend 310 bis 350 mm, statt 280 mm  
 \*\*\* dementsprechend 587 bis 627 mm, statt 557 mm