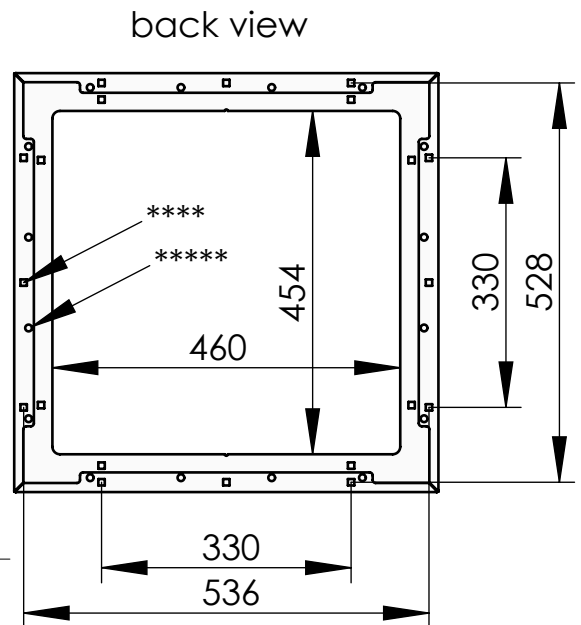
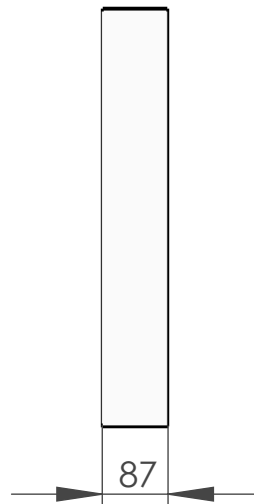
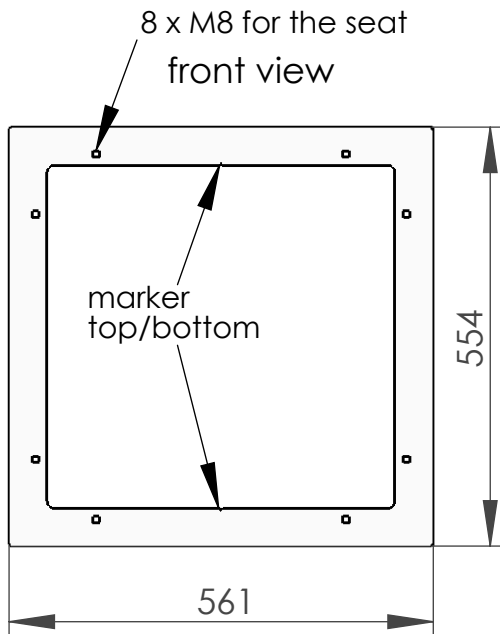
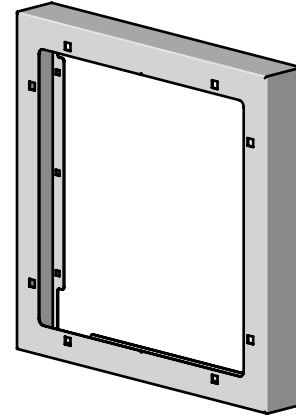
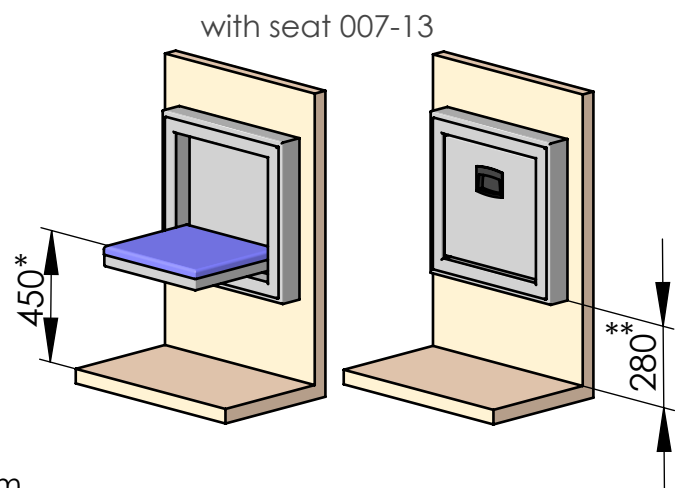
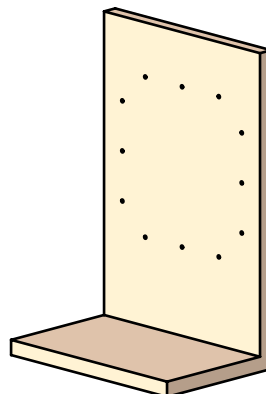
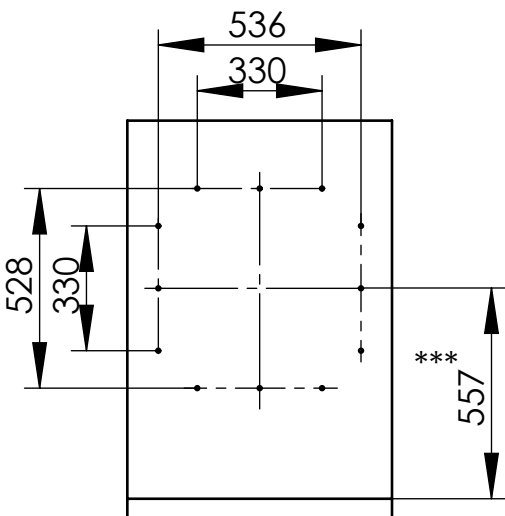


**Model 104-11-mild steel**  
**Wall-casing**  
 for flush built-in fold down seat



\*\*\*\* 12 holes  $\square 8,5$  or  
 12 treads M6  
 \*\*\*\*\* 16 holes  $\varnothing 9$



\* sitting height acc. to BS EN 81-70: 480 to 520 mm  
 \*\* accordingly 310 to 350 mm, instead of 280 mm  
 \*\*\* accordingly 587 to 627 mm, instead of 557 mm